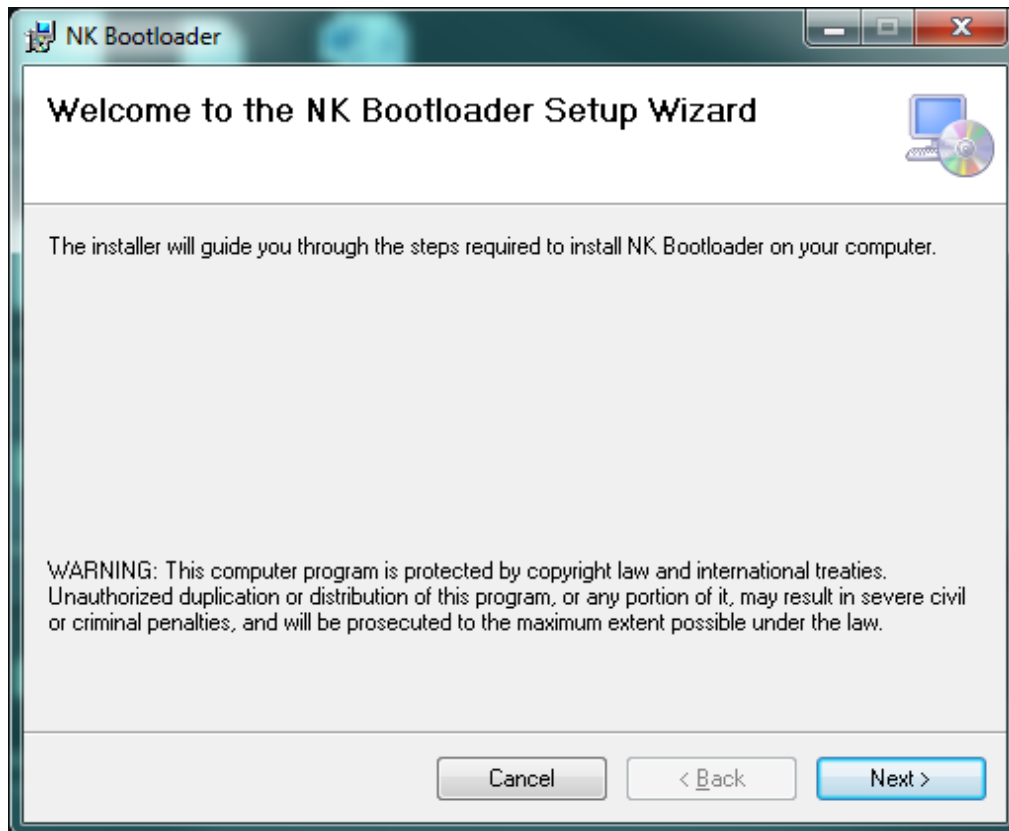
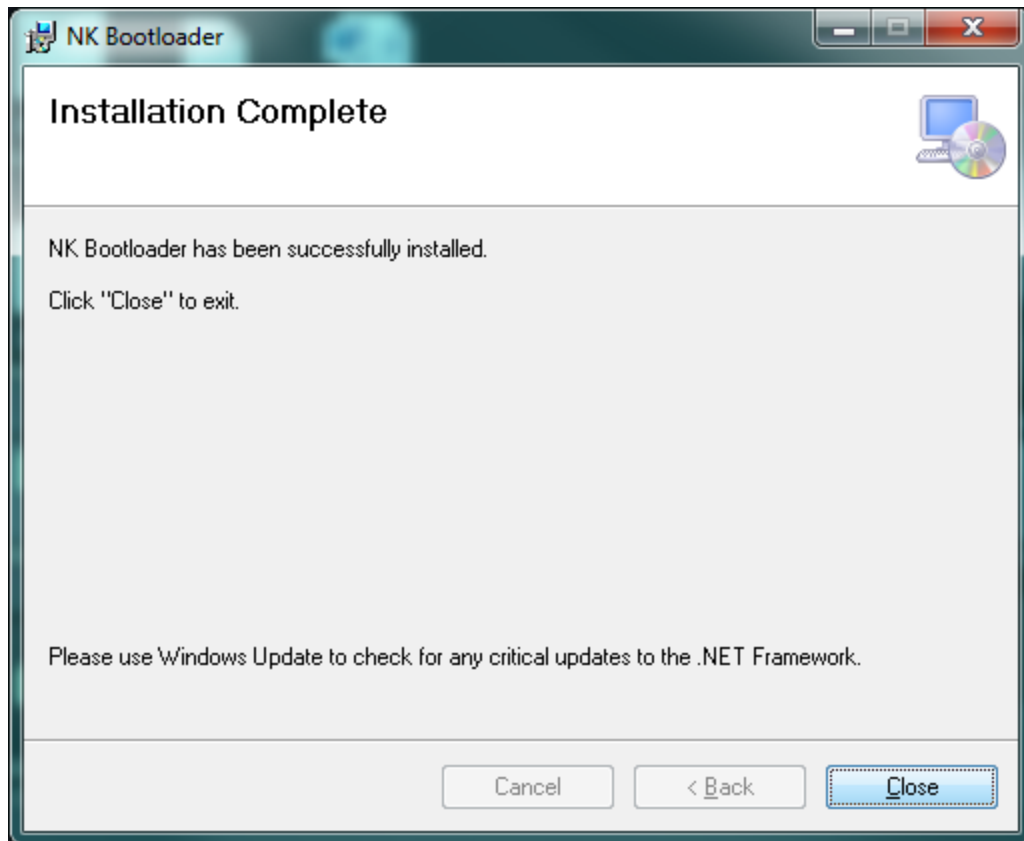


How to upgrade your Kestrel software using the NK Bootloader program

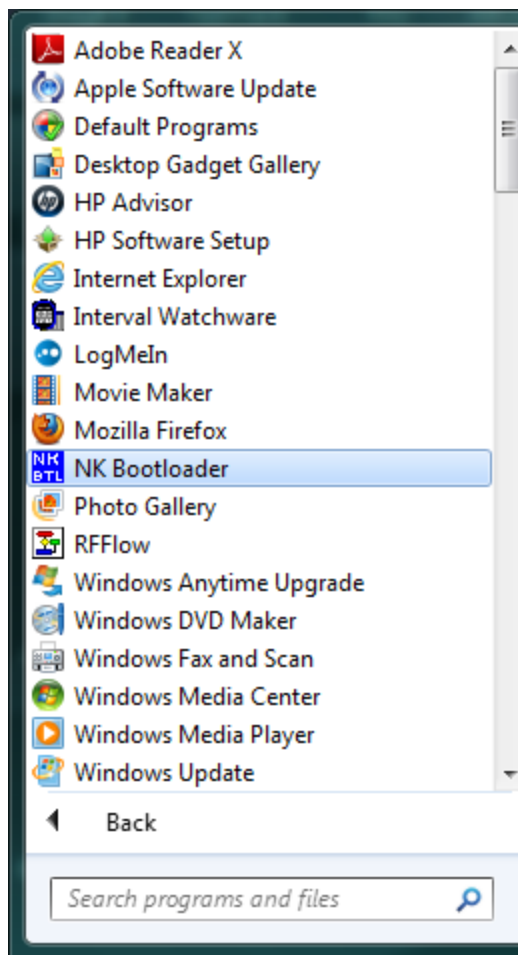
Caution: There are risks associated with using the NK Bootloader. If an error occurs during installation such as a sudden loss of connection, this may cause the Kestrel to no longer work properly. If this condition occurs, you will have to send the unit to Nielsen-Kellerman for repair.

- 1) Go to <http://www.nkhome.com/ABprofileloader/> to download the NK Bootloader zip file.
- 2) Extract the files from the zip file to a folder on your computer. Make note of the path where these files are extracted.
- 3) Click on Setup.exe and follow the instructions to install the NK Bootloader software.

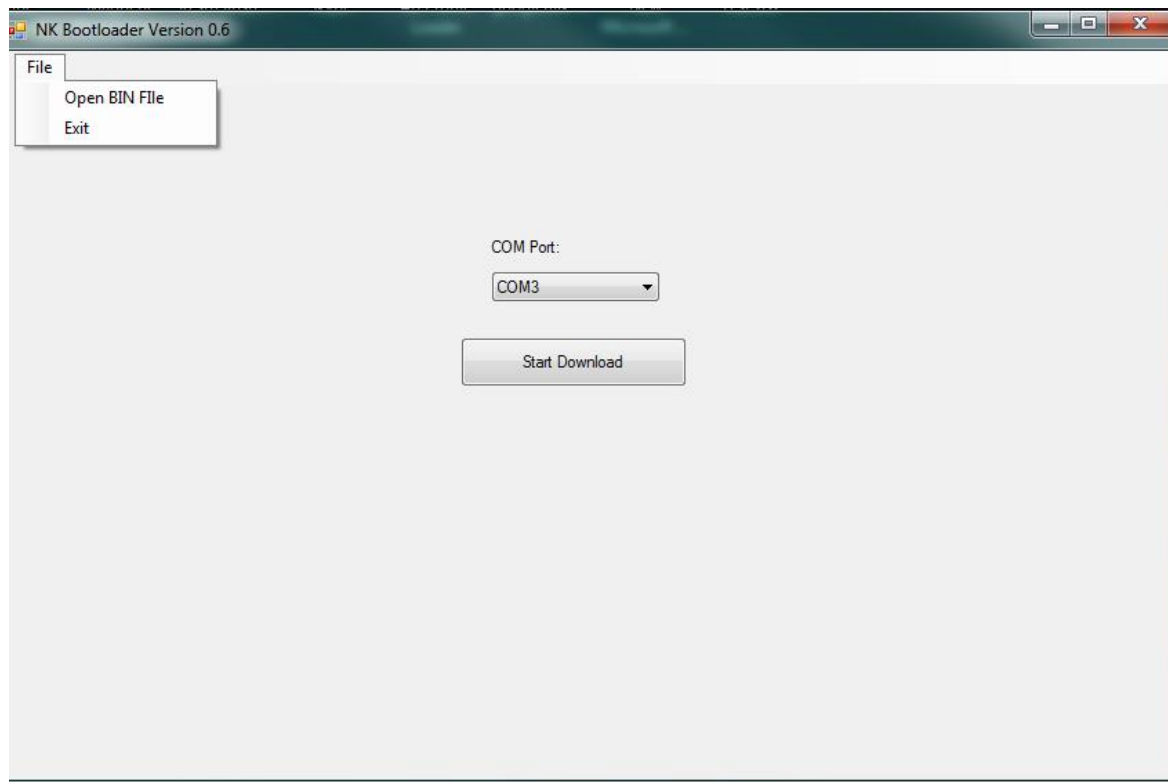




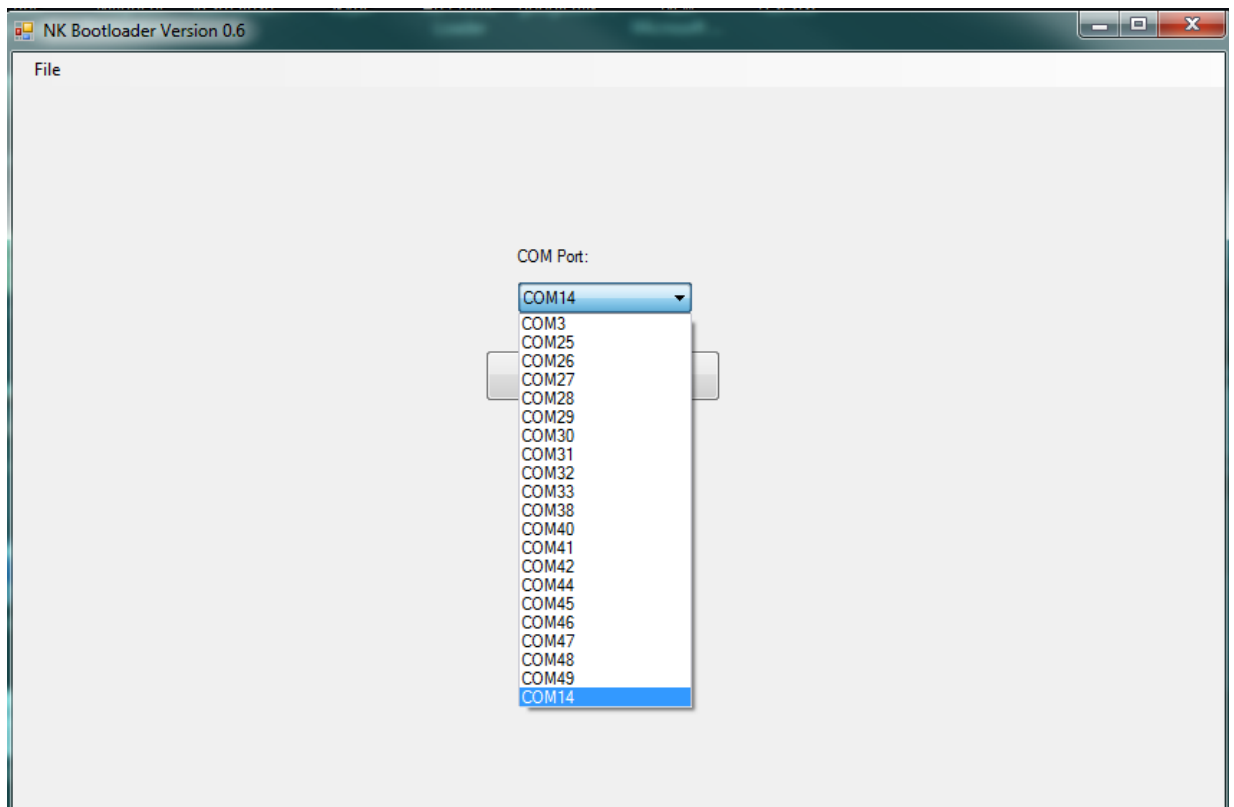
- 4) Once the file is installed, click on the Windows Start button (or go to the appropriate folder) and run the NK Bootloader software.



- 5) Click on the File tab in the top left corner. Find the folder location of where the BIN file was extracted. This file should be in the same folder location as noted in Step 2 above. Click on the BIN file and hit open.



- 6) Make sure your Bluetooth is enabled and Kestrel turned on. If you are using the PC Interface cradle, please have the Kestrel turned on and in the cradle, connected to the PC. If you need help with this go to <http://www.nkhome.com/ABprofileloader/> and read the appropriate tutorial file.
- 7) Select the correct COM port number and click start download. It will take about 10 to 15 minutes to update the Kestrel Software. You should see "REFLASH" on the Kestrel unit while updating the code.



- 8) Once the progress bar completes, you should see Download Successful. This means that the software update is complete. You can now use the Kestrel with the updated software version.